

Bag #2: Unit B, B-7 Template Layout Sheet:

Green Color #9: (Hoffman E136, #157 Verde)

1. Cut one (1) 12-1/2" by 42" strip across the grain line from Color #9. Use the 'B-7 Template Layout Sheet' and cut eight (8) triangles. *Note: Don't confuse the single copy of the B7 Star Template with the B7 Template Layout Sheet. Refer to Template Page 1* for more information.*



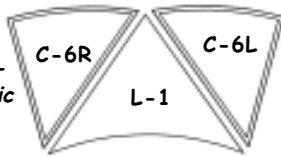
2. Clip the template and fabric pieces together and place them into Bag #2.

Bag #6: Templates C-6L, C-6R and L-1:

Blk/Brown Color #10: (Woodland Print)
(Hoffman 851, #286 sugarplum)

1. Cut four (4) 12" by 42" strips, across the grain line from Color #10. Crosscut the strips into eight (8) 21" by 12" rectangles.

2. Re-stack the fabric pieces *right-side-up* into one (1) stack of eight (8) pieces. *Note: If your fabric is directional make sure you stack all the fabric facing in the same direction.*



3. Position Templates L-1, C-6L and C-6R onto your fabric as shown in the graphic to the right. Place your ruler along the edge of each template and carefully cut out eight (8) pieces of fabric for each template. Clip the templates and fabric pieces together and place into Bag #6.

Bag #4: Unit D, Templates D-1, D-2, D-3 and D-4:

Tan-Color #2: (Hoffman E137, #250 Sahara)
Tan-Color #3: (Hoffman E137, #184 Willow)

Template D-1: Tan-Color #2: Cut four (4) 3" by 42" strips. Stack fabrics *wrong-sides-together*. Use Template D-1 and cut sixteen (16) 3" by 7-1/4" pieces.



Template D-2: Tan-Color #3: Cut two (2) 2-3/4" by 42" strips. Stack fabrics *wrong-sides-together*. Use Template D-2 and cut eight (8) 2-3/4 by 12" rectangles. Crosscut the rectangles on *Cut Line 1*, into sixteen (16) pieces.



Template D-3: Tan-Color #2: Cut three (3) 2-3/4" by 42" strips. Stack fabrics *wrong-sides-together*. **Use Template D-3** and cut (8) 2-3/4" by 9-1/4" rectangles. Crosscut the rectangles on *Cut Line 1*, into sixteen (16) pieces.



Template D-4: Tan-Color #3: Cut eight (8) 4-3/4" squares. Use Template D-4 and crosscut sixteen (16) triangle pieces.



Clip the templates and fabric pieces together for the D-Units place into Bag #4.

Bag #5: Unit G Background, Template Layout Sheet:

Tan-Color #4: (Hoffman E260, #33 Cream)

1. Cut eight (8) 3" by 42" strips, across the grain line from Color #4. Leave the strips folded in half with *wrong-sides-together*. Stack the eight (8) strips into one (1) pile.

2. Position one (1) copy of *Unit G Background, Template Layout Sheet* onto the stack of strips.



3. Place your ruler onto the *Template Layout Sheet*. Line up the edge of the ruler with *Cut Line 1* and slice through the paper and fabrics with your rotary cutter. Continue cutting until all the sections are cut apart.



4. Clip the templates and fabric pieces together for each section with a binder clip. Place the fabric pieces into Bag #5.

Bag #5: Unit G Geese, Template Layout Sheet:

Blk/Brown-Color #6: (Hoffman E264, #286 Sugarplum)

1. Cut five (5) 2-3/4" by 42" strips, across the grain line from Color #6. Leave the strips folded in half with *wrong-sides-together*. Stack the five (5) strips into one (1) pile.

2. Position one (1) copy of *Unit G Geese, Template Layout Sheet* onto the stack of strips.



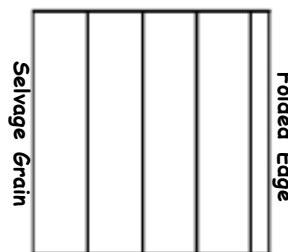
3. Place your ruler on the *Template Layout Sheet*. Line up the edge of the ruler with *Cut Line 1* and slice through the paper and fabrics with your rotary cutter. Continue cutting until all the sections are cut apart.



4. Clip the templates and fabric pieces together for each section with a binder clip. Place the fabric pieces into Bag #5.

Bag #7: Unit E Border Background, Template Layout Sheet:

Green-Color #8: (Hoffman E133, #413 Watercress)



1. Cut one (1) 25" by 42" strip, across the grain line from Color #8. Leave the strips folded in half with *wrong-sides-together*. Crosscut the fabric along the selvage grain into eight (8) 4-3/4" by 25" strips. Re-stack the strips *wrong-sides-together* into one (1) pile.

2. Position one (1) copy of *Unit E Border Background, Template Layout Sheet* onto the stack of strips.



3. Place your ruler on the *Template Layout Sheet*. Line up the edge of the ruler with *Cut Line 1* and slice through the paper and fabrics with your rotary cutter. Continue cutting until all the sections are cut apart.



4. Clip the templates and fabric pieces together for each section with a binder clip. Place the fabric pieces into Bag #7.

Bag #7: Unit E Border Spikes, Template Layout Sheet:

Blk/Brown-Color #7: (Hoffman D252 #286 Sugarplum)

1. Cut four (4) 4-3/4" by 42" strips, across the grain line from Color #7. Leave the strips folded in half with *wrong-sides-together*. Stack the four (4) strips into one pile.

2. Position one (1) copy of *Unit E Border Spikes, Template Layout Sheet* onto the stack of strips.



3. Place your ruler on the *Template Layout Sheet*. Line up the edge of the ruler with *Cut Line 1* and slice through the paper and fabrics with your rotary cutter. Continue cutting on each cut line until all the sections are cut apart.



4. Clip the templates and fabric pieces together for each section with a binder clip. Place the fabric pieces into Bag #7.

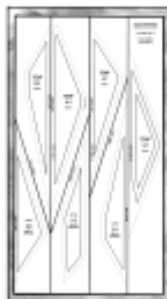
Cutting Instructions: Sample #2:

Bag #1: Unit A & B Background, Template Layout Sheet:

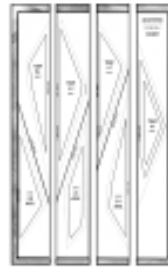
Gold-Color #1: (Hoffman E242, #33 Cream)

1. Cut two (2) 16-1/2" by 42" strips, across the grain line from Color #1. Crosscut the strips into eight (8) 9" by 16-1/2" rectangles.

2. Re-stack the fabric pieces *right-side-up* into one (1) stack of eight (8) pieces. Position one (1) copy of *Unit A & B Background, Template Layout Sheet* onto your stack.



3. Place your ruler on the *Template Layout Sheet*. Line up the edge of the ruler with *Cut Line 1*. Slice through the paper and fabrics with your rotary cutter. Continue cutting on each *Cut Line* following in numerical order until all the sections are cut apart.



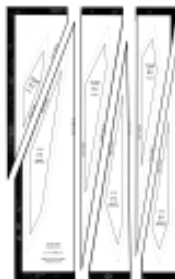
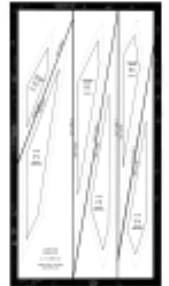
4. Clip the templates and fabric pieces together for each section with a binder clip. Place the fabric pieces for Temp. A-1, A-3, A-5 and A-7 into Bag #1. Place the fabric pieces for Temp. B-1, B-4 and B-6 into Bag #2.

Bag #1: Unit A & B Spike, Template Layout Sheet:

Green/Plum-Color (Hoffman E274, #157G VerdeGold)

1. Cut two (2) 15" by 42" strips, across the grain line from Color #9. Crosscut the strips into eight (8) 7-1/2" by 15" rectangles.

2. Re-stack the fabric pieces *right-side-up* into one (1) stack of eight (8) pieces. Position one (1) copy of *Unit A & B Spike, Template Layout Sheet* onto your stack.



3. Place your ruler on the *Template Layout Sheet*. Line up the edge of the ruler with *Cut Line 1* and slice through the paper and fabrics with your rotary cutter. Continue cutting until all the sections are cut apart.

4. Clip the templates and fabric pieces together for each section with a binder clip. Place the fabric pieces for Temp. A-2, A-4 and A-6 into Bag #1. Place the fabric pieces for Temp. B-2, B-3 and B-5 into Bag #2.

Bag #2: Unit B, B-7 Template Layout Sheet:

Plum-Color #5: (E136, #97 Raspberry)

1. Cut one (1) 12-1/2" by 42" strip across the grain line from Color #5. Use the '*B7 Template Layout Sheet*' and cut eight (8) triangles. Note: Don't confuse the single copy of the *B7 Star Template* with the *B7 Template Layout Sheet*. Refer to *Template Page 1** for more information.



Clip the template and fabrics together and place into Bag #2.

Bag #3: Unit C, Templates C-1, C-2, C-3, C-4 & C-5:

Plum-Colors #5: (Hoffman E136, #97 Raspberry)

Plum-Colors #6: (Hoffman E268, #46 Plum)

Plum-Colors #7: (Hoffman E278, #46 Plum)

Plum-Colors #8: (Hoffman E276, #46G PlumGold)

Plum-Color #8: Template C-1: Cut four (4) 2-1/4" by 42" strips. Stack fabrics *wrong-sides-together*. Use *Template C-1* and cut eight (8) 2-1/4" by 16-1/2" rectangles. Crosscut the rectangles on *Cut Line 1* to yield sixteen (16) pieces.



Bag #7: Unit E Border Spikes, Template Layout Sheet:

Green/Plum-Color #10: (Hoffman E279, #46G PlumGold)

1. Cut four (4) 4-3/4" by 42" strips, across the grain line from Color #10. Leave the strips folded in half with **wrong-sides-together**. Stack the four (4) strips into one pile.

2. Position one (1) copy of *Unit E Border Spikes, Template Layout Sheet* onto the stack of strips.



3. Place your ruler on the *Template Layout Sheet*. Line up the edge of the ruler with **Cut Line 1** and slice through the paper and fabrics with your rotary cutter. Continue cutting on each cut line until all the sections are cut apart.



4. Clip the templates and fabric pieces together for each section with a binder clip. Place the fabric pieces into Bag #7.

Bag #4: Unit D, Templates D-1, D-2, D-3 and D-4:

Gold-Colors #2: (Hoffman E234, #33 Cream)

Gold-Colors #3: (Hoffman E260, #33 Cream)

Gold-Colors #4: (Hoffman E258, #33 Cream)

Template D-1: Gold-Color #4: Cut four (4) 3" by 42" strips. Stack fabrics **wrong-sides-together**. Use Template D-1 and cut sixteen (16) 3" by 7-1/4" pieces.



Template D-2: Gold-Color #2: Cut three (3) 2-3/4" by 42" strips. Stack fabrics **wrong-sides-together**. Use Template D-2 and cut eight (8) 2-3/4" by 12" rectangles. Crosscut the rectangles into sixteen (16) pieces.



Template D-3: Gold-Color #3: Cut two (2) 2-3/4" by 42" strips. Stack fabrics **wrong-sides-together**. **Use Template D-3** and cut eight (8) 2-3/4" by 9-1/4" rectangles. Crosscut the rectangles into sixteen (16) pieces.



Template D-4: Gold-Color #4: Cut one (1) 4-3/4" rectangle. Use Template D-4 and cut sixteen (16) triangle pieces.



Note: If you run short on fabric for these pieces, use your left-over scraps from the other three (3) background colors to finish cutting out the pieces.

Clip the templates and fabric pieces together for the D-Units place into Bag #4.

Special Hints:

Adjust the Tension, Stitch Length, and Needle Size on your machine before you begin to sew: The tension and stitch length on your machine should be adjusted according to the weight of the paper on which you are sewing. Sew a couple practice seams through a few scraps of paper and fabric. Check the tension for even, tight stitches. If the paper is hard to pull away from the fabric, tighten the stitch a bit. If the paper falls apart during the sewing process, loosen the stitch a bit.

Needles: For lightweight paper like newsprint, I use size 70 needles. Change your needles often. The needles become dull very fast when sewing through paper which may cause your machine to miss stitches.

Pressing: Most ink used for printing is not permanent if it gets pressed into your fabric, but it can cause a big mess. The ink will wash out of most fabrics but try to avoid this problem by following these guidelines.

1. Always press on the backside of the paper, avoiding the black lines. This will keep the ink off the bottom of the iron. Protect your ironing board by placing a strip of muslin over your board while working on foundation paper.

2. Don't stack the foundation papers on top of each other when pressing the seams. If you do, you may press ink marks into the fabric directly under the piece you are pressing. The best way to avoid this is to press one piece, set it to the side, and then press the next piece. Steam may cause the ink to come off easily and may also shrink the paper a little, so don't use too much steam. A little steam is okay. Just be careful! If the paper curls in the pressing process, turn the temperature down on the iron just a bit and adjust the steam.

Template Pieces: All the template pieces designed for this pattern are bigger than the section they were designed to cover on the foundation paper. If you find a piece does not cover the section it was intended to cover, it means you have done something wrong. It could be one of several things.

1. The fabric piece may have been positioned incorrectly before sewing it onto the foundation paper.

2. You may have cut out the fabric pieces incorrectly by cutting on the wrong lines.

3. The piece you are working on might be a directional piece and you may have the wrong piece of fabric or you may have cut them out backwards.

Whatever the reason, remember, mistakes can be corrected.

Sew Sides: The sew-side is the first side of any piece that is sewn to the foundation paper. Each time you add a new piece of fabric to the foundation paper, the sew-side is lined up to the trimmed 1/4" seam allowance. Some template pieces are directional. If you don't match the sew-sides on a directional piece, you will reverse the piece causing it not to cover the section it was cut for. I have written the sew sides on the templates that cannot be reversed.

Trimming the Curved Edge: When trimming a curved unit, carefully walk the rotary cutter around the curved edge of the foundation paper. Keep your fingers to the side of the blade just behind the front edge, not in front. This way if the blade slips you will only cut the paper and the fabric, not your fingers.

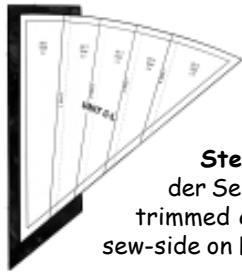
Foundation Paper: The foundation paper is not removed until after the foundation piecing is completed for the whole quilt. I have included information about removing the foundation paper on page 11.

Foundation Paper Piecing:

Bag #3: Unit C: Make 8 left and 8 right units:



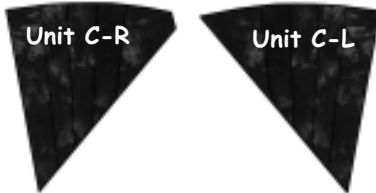
Step 1: Glue Fabric #1 under Sec. 1.



Step 2: Place the fold template on Line 1. Fold back the paper and trim a quarter-inch seam with the add-a-quarter ruler.

Step 3: Position fabric #2 *right-side-up* under Sec. 2 with the paper folded back. Line up the trimmed quarter-inch seam on Fabric #1 with the sew-side on Fabric #2.

When the foundation piecing is completed trim the excess fabric off each unit with your rotary cutter. **Do not remove the foundation papers at this time.** Set the pieces aside and continue with Unit D.

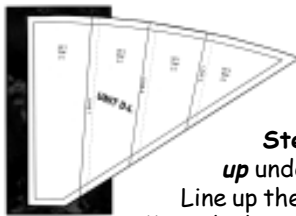


Foundation Paper Piecing:

Bag #4: Unit D: Make 8 left and 8 right units.



Step 1: Glue Fabric #1 under Sec. 1.



Step 2: Place the fold template on Line 1. Fold back the paper and trim a quarter-inch seam with the add-a-quarter ruler.

Step 3: Position fabric #2 *right-side-up* under Sec. 2 with the paper folded back. Line up the trimmed quarter-inch seam on Fabric #1 with the sew-side on Fabric #2.

When the foundation piecing is completed trim the excess fabric off each unit with your rotary cutter.



Note: Set your machine to sew a quarter-inch seam allowance before you begin the curved piecing.

Remove the Foundation Paper:

Before you layout your quilt and sew the wedges together you need to remove the foundation papers from Units A, C, D, E and G.

Do not remove the paper from Unit B. The pie shaped wedges are sewn together with the foundation papers attached to Unit B. The rest of the paper on the other unit should be removed before sewing the wedges.

Note. On the backside of Unit B Notice on Sec. 7 there are 3 curved lines. Cutting on the lines will give you the hole needed in the enter of the quilt to make this a tree skirt. The finished hole size is written on each curved line. If you want to use this quilt as a Table Cloth then don't cut the circle out of the center.

Removing the Paper: Place your finger at the end of each seam. Pinch the fabric and paper at the beginning of your stitches. Pull back on the paper and begin tearing the paper away from the fabric. Start with the last piece sewn onto the foundation paper and remove the paper in descending order finishing with the first piece.

Sometimes little bits of paper get left within the seam allowance when removing the paper but these pieces will rinse away over time when washing your quilt.

Assemble the Units

Units A, B & C: Make eight (8) sets.

Follow the layout of the Exploded View on page 13 as a guide to layout your Tree Skirt.

Unit A **Step 1:** Sew Units A & B together. Place Unit B on top of Unit A. You only have one seam to match when sewing these units together and it is a little tricky. Place a pin on each side of the intersecting point where the two seams crossover on Line 1. This will keep the two units from moving as you sew over the seams.

Unit B Press the joining seams toward Unit-B.

Unit C-R **Step 2:** Sew the C-R Unit onto the left edge of the A & B Units. Press the joining seams toward Unit-C.

Unit C-L **Step 3:** Sew Unit C-L onto the right edge of Star Point. Press the joining seams toward the C-Unit.

Fabric Chart Sample #1

Tan-Color #1
Hoffman
1895 #411 Scones
1 Yard

Color #1

Tan-Color #2
Hoffman
E137 #250 Sahara
5/8 Yard

Color #2

Tan-Color #3
Hoffman
E137 #184 Willow
1/2 Yard

Color #3

Tan-Color #4
Hoffman
E260 #33 Cream
3/4 Yard

Color #4

Blk/Brown-Color #5
Hoffman
885 #286 Sugarplum
1 Yard

Color #5

Blk/Brown-Color #6
Hoffman
E264 #286 Sugarplum
1/2 Yard

Color #6

Blk/Brown-Color #7
Hoffman
D252 #286 Sugarplum
3/4 Yard

Color #7

Green-Color #8
Hoffman
E133 #413 Watercress
3/4 Yard

Color #8

Green-Color #9
Hoffman
E136 #157 Verde
1/2 Yard

Color #9

Blk/Brown-Color #10
Hoffman
851 #286 Sugarplum
1-1/2 Yard

Color #10

Fabric Chart Sample #2

Gold-Color #1
Hoffman
C242 #33 Cream
1 Yard

Color #1

Gold-Color #2
Hoffman
E234 #33 Cream
1 Yard

Color #2

Gold-Color #3
Hoffman
E260 #33 Cream
1 Yard

Color #3

Gold-Color #4
Hoffman
E258 #33 Cream
3/8 Yard

Color #4

Plum-Color #5
Hoffman
E136 #97 Raspberry
1/2 Yard

Color #5

Plum-Color #6
Hoffman
E268 #46 Plum
3/8 Yard

Color #6

Plum-Color #7
Hoffman
E278 #46 Plum
3/8 Yard

Color #7

Plum-Color #8
Hoffman
E276 #46G PlumGold
3/8 Yard

Color #8

Green/Plum-Color #9
Hoffman
E274 #157G VerdeGold
2-1/2 Yard

Color #9

Green/Plum-Color #10
Hoffman
E279 #46G PlumGold
1-1/4 Yard

Color #10

Christmas Celebration Tree Skirt

60" by 60"

Yardage Chart

Inventory #
JNQ-61P
NP82:
TP16: TP17:

Judy and Brad Niemeyer have designed a new Tree Skirt called Christmas Celebration. Foundation paper piecing, floating spikes, floating geese, curved piecing, traditional piecing, and template layout sheets are all design elements used to create this tree skirt for foundation paper piecing. A collection of Seasonal Bali Batiks designed by Hoffman California Fabrics were used to make the samples on the cover.

Yardage Requirements for Sample #1

(Yardage requirements for Sample 32 found on Page 13)

Tan-Color #1:	1yd:	(Hoffman 1895, #411 Scones)
Tan-Colors #2:	5/8 yd:	(Hoffman E137, #250 Sahara)
Tan-Colors #3:	1/2 yd:	(Hoffman E137, #184 Willow)
Tan-Color #4:	3/4 yd:	(Hoffman E260, #33 Cream)
Blk/Brown-Color #5:	1 yd:	(Hoffman 885, #286 Sugarplum)
Blk/Brown-Color #6:	1/2 yd:	(Hoffman E264, #286 Sugarplum)
Blk/Brown-Color #7:	3/4 yd:	(Hoffman D252, #286 Sugarplum)
Green-Color #8:	3/4 yd:	(Hoffman E133, #413 Watercress)
Green-Color #9:	1/2 yd:	(Hoffman E136, #157 Verde)
Blk/Brown-Color #10:	1-1/2yds:	(Hoffman 851, #286 sugarplum)

Backing: 4 Yards Binding: 1 Yard
Batting: 2 yards (Hobbs Heirloom 80/20) 90" Wide

A complete set of foundation papers can be purchased to make one additional Tree Skirts. This information can be found on our Web Page with a complete listing of all our patterns. www.quiltworx.com. Our Web Page also has a sample page showing many of our quilts along with a slide show of color changing quilts for your enjoyment.

© Copyright April 2008

All rights reserved. No part of this pattern can be reproduced in any form for any commercial purpose without the expressed written permission of Judy Niemeyer Quilting. The written instructions, foundation papers, graphics, and photographs for Christmas Celebration Tree Skirt were designed as a package for the purpose of retail sales and as a result fall under the protection of the federal copyright laws of the United States of America. Extra materials may be obtained from local quilt shops or directly from Judy Niemeyer Quilting.

Judy Niemeyer Quilting

PO Box 5264 444 Margrethe RD

Kalispell, MT 59903

Email: judy@quiltworx.com

homepage: www.quiltworx.com



8 11823 00610 6
Christmas Celebration Pat

Print Date: 4/8/09