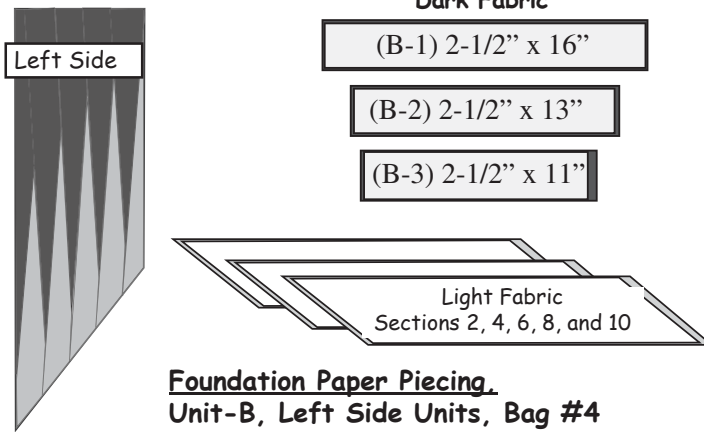


Stacking is the same for the Left Side Units: Each strip yields enough fabric to cover two (2) sections. The dark fabric is used for Sec. 1, 3, 5, 7, and 9. The light fabric is used for Sec. 2, 4, 6, 8, and 10.



The steps for the foundation piecing are the same for the left side units, only the pieces are flipped. Complete (10) units.

Cutting the Black Strips: Unit-K, Left and Right Sides

1. Cut (16) 2" by 42" strips across the selvage grain. Open and stack the strips *right-side-up*. Divide the strips into (2) stacks of (8) strips each. Use the K-5 templates and cut (30) left and (30) right pieces. These pieces are used for Sec. 10 & 11.

Use Temp K-5 Left, Cut (30) pieces, Place into Bag #5,



Use Temp K-5 Right, Cut (30) pieces, Place into Bag #6,

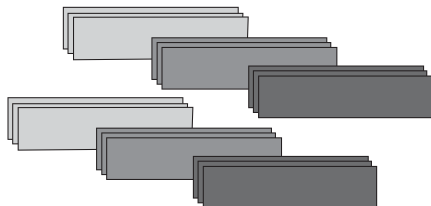


Cutting Instructions, Unit-K Dark Fabrics: (3) Colors:

1. Cut (9) 5" by 42" strips from the dark fabric, (3) from each color. Sub-cut each strip in half to yield (6) 5" by 21" pieces from each color.

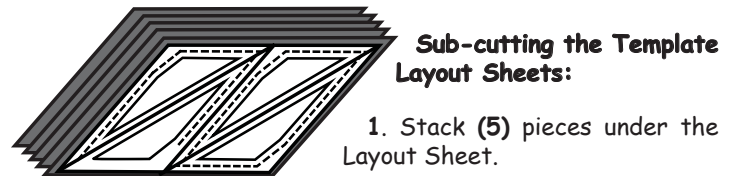
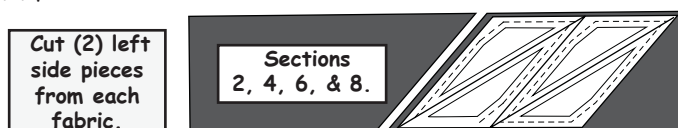
2. Keeping the fabrics separated by color, make (2) stack of (3) pieces from each color.

Note: If the width of your fabric is less than 42" then you may need to adjust your half way measurement.

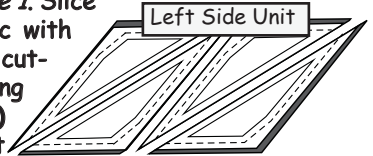


Unit-K Left Side, Template Layout Sheet, Bag #5

Position (1) *Template Layout Sheet* onto each set of strips. Cut (5) pieces from each color.



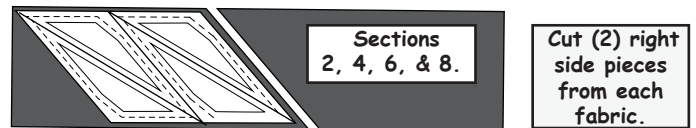
2. Place your ruler on the *Template Layout Sheet*. Line up the edge of the ruler with *Cut Line 1*. Slice through the paper and fabric with your rotary cutter. Continue cutting on each *Cut Line*, following in numerical order until the (4) sections are cut apart. Repeat this for each stack.



3. Clip the individual stacks together and place them into Bag #5.

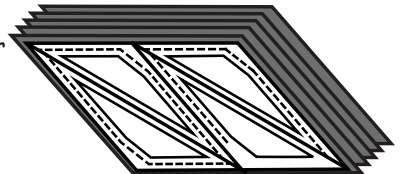
Unit-K Right Side, Template Layout Sheet, Bag #6

Position (1) *Template Layout Sheet* onto each set of strips. Cut (5) pieces from each color.



Sub-cutting the Template Layout Sheets:

1. Stack (5) pieces under the Layout Sheet.



2. Place your ruler on the *Template Layout Sheet*. Line up the edge of the ruler with *Cut Line 1*. Slice through the paper and fabric with your rotary cutter. Continue cutting until all the sections are cut apart. Repeat this for each stack.

3. Clip the individual stacks together and place them into Bag #6.

Cutting Instructions, Unit-K Light Fabrics: (3) Colors:

1. Cut (6) 9" by 42" strips of light fabric, (2) strips are cut from each color. Sub-cut each strip in half to yield (2) 9" by 21" pieces from each strip.

2. Keeping the fabrics separated by color, make (3) stack of (2) pieces from each color.

Note: If the width of your fabric is less than 42" then you may need to adjust your half way measurement.

