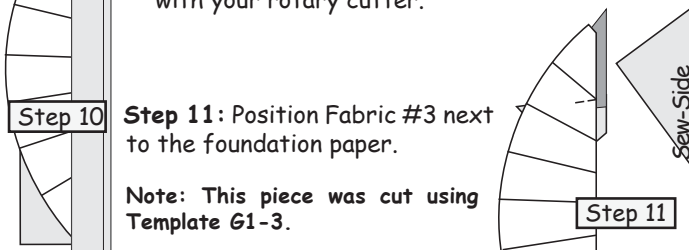
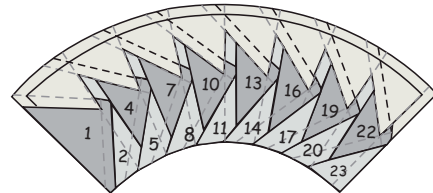
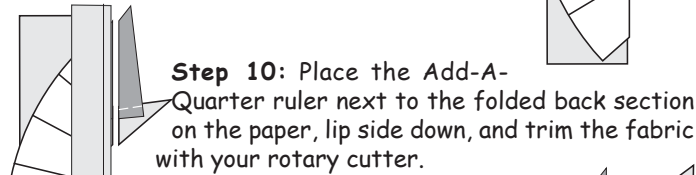
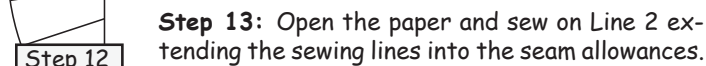
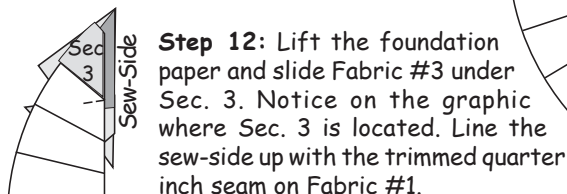


Removing the Paper: At this time remove the foundation papers under Sec's 1, 2, 4, 5, 7, 8, 10, 11, 13, 14, 16, 17, 19, 20, 22, & 23. The papers under the sections for Temp. G1-3 are left attached to the fabric to add stability when sewing the outer curved seams.

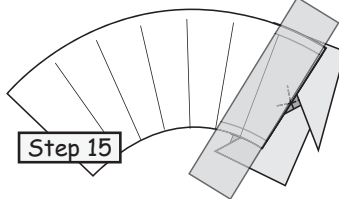
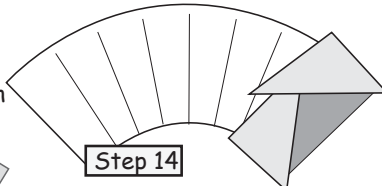


Preparing and Stacking the Fabrics for Chain Piecing Unit-G2L and Unit-G2R:

Position the templates and fabric pieces in Bag #2 facing *right-side-up*. The sew-sides are aligned at the top. You should have eight (8) pieces in each pile. When stacking, start with Sec. 24 on the bottom, ending with Sec. 1 on the top. The G2 Templates are a mirror images of the G1 Template shown on page 4.



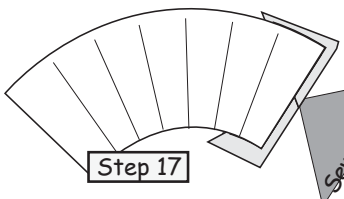
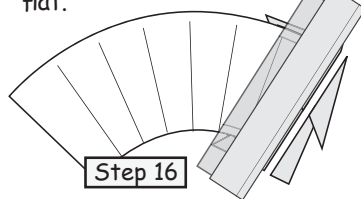
Step 14: Press the fabric on the *backside* of the papers.



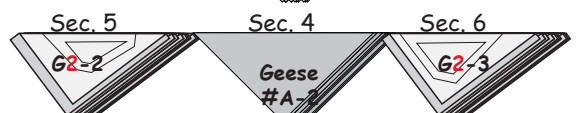
Step 15:



Step 16: Trim the fabric with the Add-A-Quarter ruler.



Step 17:

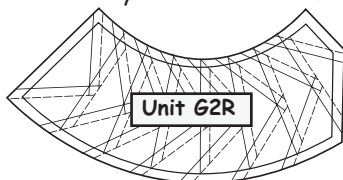
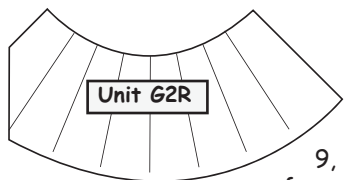


Continue sewing all the pieces onto the foundation paper. When the foundation piecing is finished, trim the excess fabric from the foundation paper as shown above.

Foundation Paper Piecing

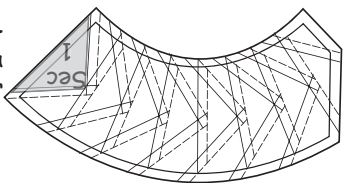
The left and right G2-Units butt up against the Star Points when sewing them into the border. This is the reason for the cut off section on the opposite ends of each unit. The G2-Units are a mirror image of the G1-Units on page 4. The paper piecing will seam backwards as you begin, but after the first couple pieces are sewn onto the paper it will flow as easily as the G1-Units.

Unit-G2R: Make (4) Units:

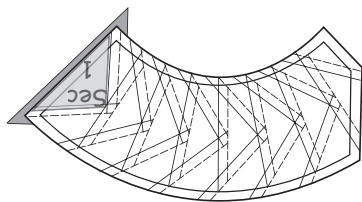


Step 1: Trace the straight dashed lines next to lines, 3, 6, 9, 12, 15, 18 and 21 on the *backside* of your foundation papers.

Step 2: Place **Unit-G2R printed-side-up** on your table. Place a small amount of fabric glue under Sec. 1.



Step 3: Position Fabric #1 *wrong-side-up* under Sec. 1.



Step 4: Fold back the paper and trim with the Add-A-Quarter ruler.

Step 5: Place Fabric #2, *right-side-up* next to the folded back paper.

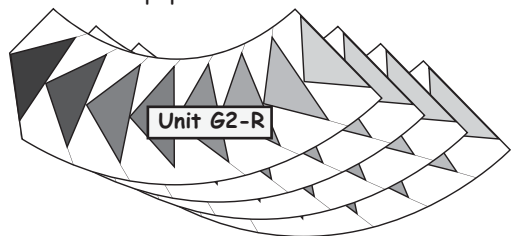
Note: Fabric #2 was cut using Template G2-2.

Step 6: Lift the foundation paper and slide the fabric directly under Sec. 2. Line up the sew-side with the trimmed quarter-inch edge of Fabric #2.

Step 7: Open your paper and sew the first (2) fabric pieces onto the foundation paper.

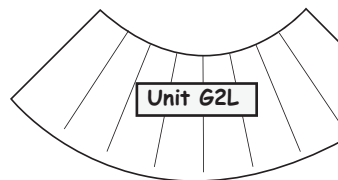
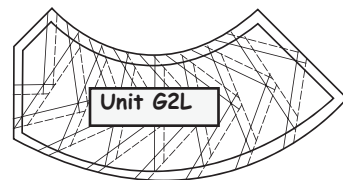
Continue with the paper piecing by repeating steps 8-17 on page 4 and 5.

When the foundation piecing is finished trim the excess fabric from the foundation paper.



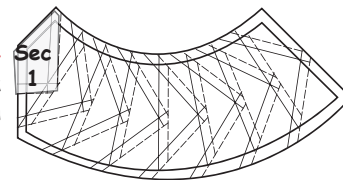
Removing the Paper: At this time remove the foundation papers under Sec's 1, 2, 4, 5, 7, 8, 10, 11, 13, 14, 16, 17, 19, 20, 22, & 23. The papers under the sections for Temp. G2-3 are left attached to the fabric to add stability when sewing the outer curved seams.

Unit-G2L: Make (4) Units:



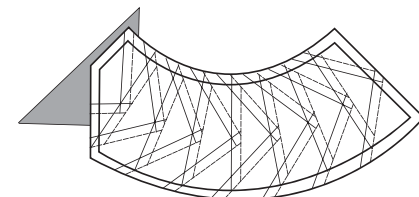
Step 1: Trace the straight dashed lines next to lines, 3, 6, 9, 12, 15, 18 and 21 on the *backside* of your foundation papers.

Step 2: Place **Unit-G2L printed-side-up** on your table. Place a small amount of fabric glue on under Sec. 1.



Step 3: Position Fabric #1 *wrong-side-up* under Sec. 1.

Step 4: Fold back the paper and trim with the Add-A-Quarter ruler.



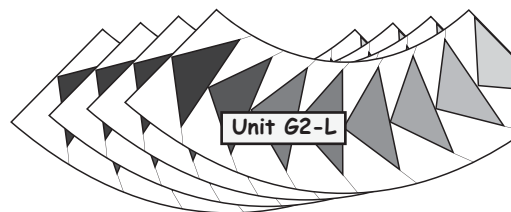
Step 5: Place Fabric #2, *right-side-up* next to the folded back paper.

Note: Fabric #2 was cut using Template G2-2.

Step 6: Lift the foundation paper and slide the fabric directly under Sec. 2. Line up the sew-side with the trimmed quarter-inch edge of Fabric #2.

Step 7: Open your paper and sew the first (2) fabric pieces onto the foundation paper.

Continue with the paper piecing by repeating steps 8-17 on page 4 and 5. When the foundation piecing is finished trim the excess fabric from the foundation paper.



Removing the Paper: At this time remove the foundation papers under Sec's 1, 2, 4, 5, 7, 8, 10, 11, 13, 14, 16, 17, 19, 20, 22, & 23.

Sharing Techniques: Some of you are probably wondering why I designed foundation papers for the G3L and G3R units on the following page.

Answer: When I start designing the little miniature stars with floating points back in 2004. I discovered very quickly how much easier it was to complete the curved piecing when the foundation paper was left on the *backside* of the small melon pieces. I also discovered a very simple pleating process that allowed me to pre-fit the larger curved units onto the small melons.

Both these techniques will be used on page 8 when completing the curved piecing for the G3L and G3R units. Since this program is about technique I decided it was important to share this technique with you.