

Cutting Instructions

Fabric Width: The yardage amounts and cutting instructions were calculated to use 42" wide fabrics. If your fabrics are not 42" wide you may need to recalculate the yardage.

Fabrics for the Arcs: 1/6 yard each of (8) fabrics. Arrange the colors in the order you want them sewn onto the foundation papers. Number these fabrics, colors 1-8:

Cut (2) 2-1/2" by 42" strips across the grain from each of the (8) fabrics.

Fabrics for the Corner Pieces: 1/8 yard each of (2) fabrics. Number these fabrics, as color 9 & 10.

Cut (1) 3" by 42" strip from each color 9 & 10. Cut the pieces listed below from each strip then place them into Bag #2.

*Cut (10) 2-1/2" by 3" pieces from color #9.
Cut (16) 2-1/2" by 3" pieces from color #10.*

Centers, Melons, & Backing: 1-2/3 yards of (1) fabric. Refer to the fabric layout on the TP-34 template page before cutting the centers and melons template pieces.

Cut (1) 24" by 60" strip off one side of the yardage for the backing.

Iron the freezer paper templates for the center and melon templates onto the other half of the yardage. Cut the fabric pieces out by trimming around the freezer paper templates. The melons are placed into Bag #1 and the centers into Bag #2.

Note: Do not remove the freezer paper from the fabric pieces. The freezer paper is used as a stabilizer, preventing your pieces from stretching while sewing the curved seams.

Special Hints

Adjust the Tension, and Stitch Length: The tension and stitch length on your machine should be adjusted according to the weight of the paper on which you are sewing. Sew a couple practice seams through a few scraps of paper and fabric. Check the tension for even, tight stitches. If the paper is hard to pull away from the fabric, tighten the stitch a bit. If the paper falls apart during the sewing process, loosen the stitch a bit.

Needle Size: I use size 70 Microtex sharp needles when I sew on the newsprint.

Pressing: Most ink used for printing is not permanent if it gets pressed into your fabric, but it can cause a big mess. The ink will wash out of most fabrics but try to avoid this problem by following these guidelines.

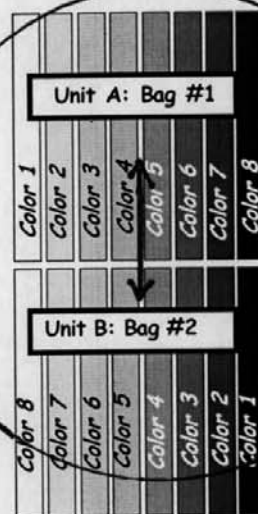
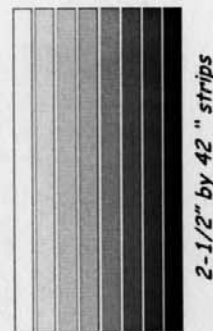
1: Always press on the backside of the paper, avoiding the black lines. This will keep the ink off the bottom of the iron. Protect your ironing board by placing a strip of muslin over your board while working on foundation paper.

2: Don't stack the foundation papers on top of each other when pressing the seams. If you do, you may press ink marks into the fabric directly under the piece you are pressing. The best way to avoid this is to press one piece, set it to the side, and then press the next piece.

3: Steam may cause the ink to come off easily and may also shrink the paper a little, so don't use too much steam. A little steam is okay. Just be careful! If the paper curls in the pressing process, turn the temperature down on the iron just a bit and adjust the steam.

Stacking Fabrics

The 2-1/2" strips are sewn onto the foundation papers to make the arcs for Unit A and Unit B. Build two strip sets by placing one strip from each color into each set.



Cut the 42" strips in half. This will give you (4) sets, each set measuring about 21" long.

(2) sets, Unit A: Arrange the strips in the order you want them sewn onto the foundation papers. The graphic was arranged with Color 1, as the lightest color and Color 8, as the darkest color. Place the strips for the Unit-A into Bag #1.

(2) Sets, Unit B: You will need to reverse the color numbers for the B-units. Color 1, is now the darkest color and Color 8, is the lightest color. Place the strips for the Unit-B into Bag #2

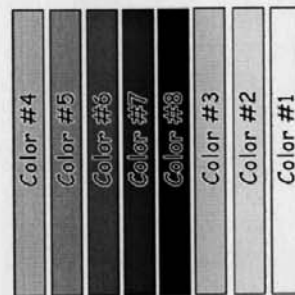
Fabric Selection: How you layout out your colors is up to you. The brown quilt on the cover was designed with lighter colors on both ends and darker colors in the middle. The blue quilt was designed using (16) different Bali Pop strips.



Stacking the Strips for Foundation Paper Piecing Unit A: Bag #1

The strips are rearranged and stacked in the order the colors are sewn onto the foundation papers. Follow the stacking process starting with color #4.

*Color 4, Wrong-side-up
Color 5, Right-side-up
Color 6, Right-side-up
Color 7, Right-side-up
Color 8, Right-side-up
Color 3, Right-side-up
Color 2, Right-side-up
Color 1, Right-side-up*



Starting with Color 4, flip the fabric over, so the strip is facing *wrong-side-up*, and position it onto the top of Color 5. Color 4, and Color 5 are now facing *right-sides-together*, with Color 4 on the top.

Color 6, is place *right-side-up*, under Color 5.

