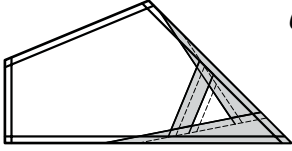
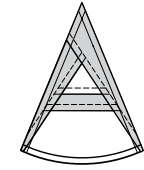
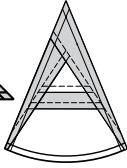


**Bags #3 Contents: NP216 and NP217
(Captain's Wheel Left Units)**

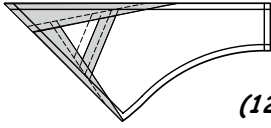
(36) Unit BL



(4) Unit CL



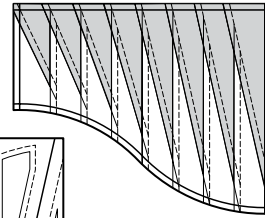
(12) Unit DL



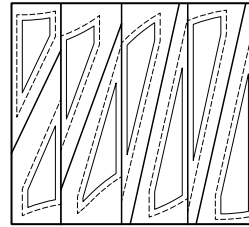
(12) Unit EL

**Bag #4 Contents: NP218 and TP108
(Border Sails Right Units)**

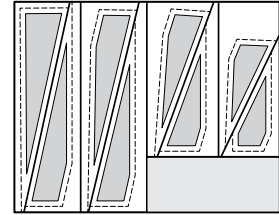
(12) Unit CGB-R



(1) Template CGB-Right (Background)

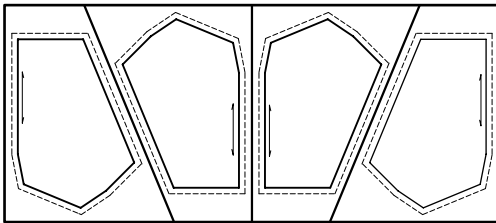


(1) Template CGB-Right (Accent)

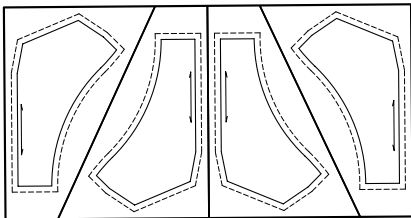


Place into Bag #2. These will be cut apart and sorted later into Bag #2 or #3: TP106, TP107, and NP217

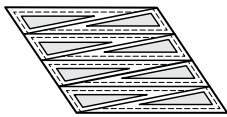
(2) Template BR and BL



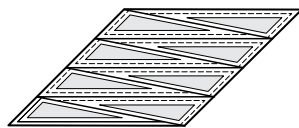
(1) Template ER and EL



(2) Template CW-4



(2) Template CW-5



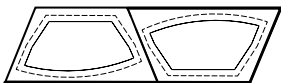
(4) Template CW-2



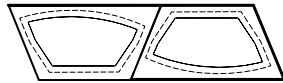
(2) Template CW-3



(2) Template DR and DL

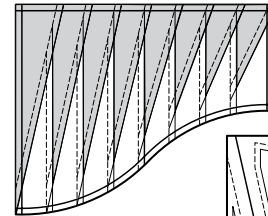


(1) Template CR and CL

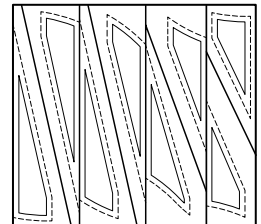


**Bag #5 Contents: NP218 and TP108
(Border Sails Left Units)**

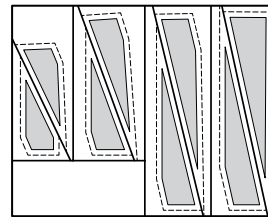
(12) Unit CGB-L



(1) Template CGB-Left (Background)

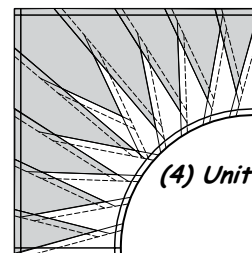
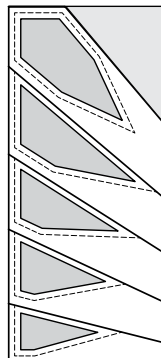


(1) Template CGB-Left (Accent)

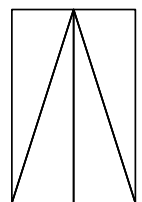


Bag #6 Contents: NP219 (Border Corner Sails)

(1) Temp CGC Accent 1



(4) Unit CGC



(1) Temp CGC Background Spike

(1) Temp CGC Accent 2

