



# Carnival Flower

WALL  
80" x 80"

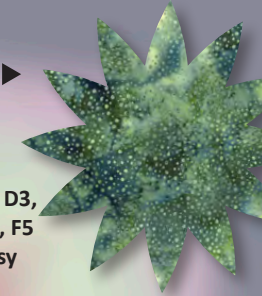
Pieced by CI Cat Wilson and Quilted by Mona Beck

Backing: 7 3/8 yd • Binding: 3/4 yd: TONGA-B8163 CHERRY

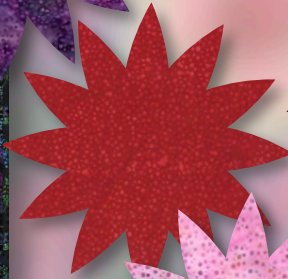


E3  
885-549-Celestials  
3/8 yd

A4, B2, B3, D2, D3,  
D4, D5, D8, D9, F5  
885-437-Pansy  
1 3/4 yd



F4  
885-403-Cherry  
1/2 yd

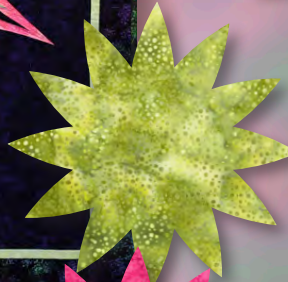


C4:f, D7, D10  
885-374-Light  
Camellia  
1/2 yd

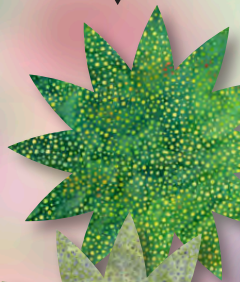


E5  
885-211  
Green-Tea  
3/8 yd

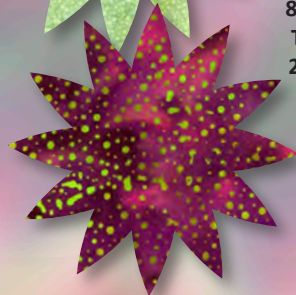
C5, C6, E4  
885-115-Grass  
1 1/8 yd



C3:d, C4:d  
885-12-Pink  
3/8 yd

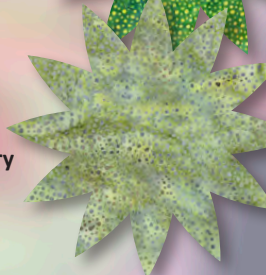


D1, E2, G2  
885-N45-New-Grape  
1 yd



F2, C3:a, C4:a  
885-337-Shirley  
1 yd

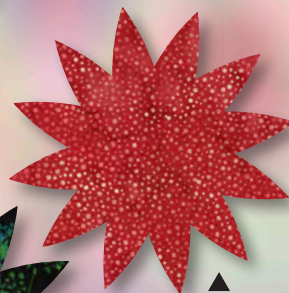
E6  
885-106-Celery  
3/8 yd



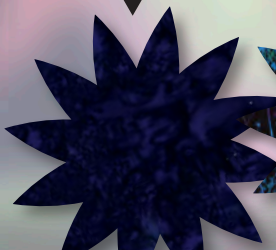
C1, C2, H1  
1895-197-  
Black-Grape  
3 1/2 yd



H3  
U2466-657-  
Spectrum  
1 1/2 yd



A2, C3:c,  
C4:c, D11, E1  
885-H12-Hot-Pink  
2 3/4 yd



A3, B1, C3:b,  
C4:b, D6, F3  
885 348-Lucy  
1 1/2 yd



Quiltworx.com  
*Julie Niemeyer Quilting*

E-mail: info@quiltworx.com  
Website: www.quiltworx.com

Visit us on:

